

# PRODUCT INFORMATION PACKET

Model No: 056C17W5326  
Catalog No: N531  
1/3,1725,TEFC,56C,1/60/115/208-230  
Washdown Duty



Regal and Marathon are trademarks of Regal Beloit Corporation or one of its affiliated companies.

©2018 Regal Beloit Corporation, All Rights Reserved. MC017097E





### Nameplate Specifications

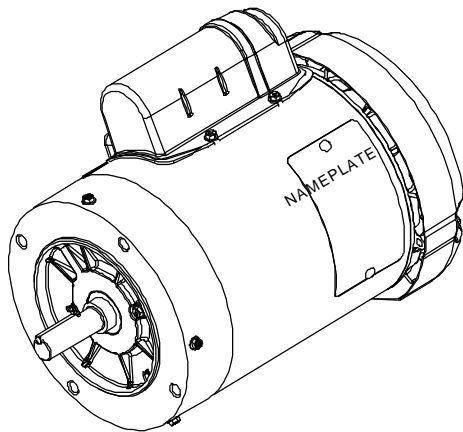
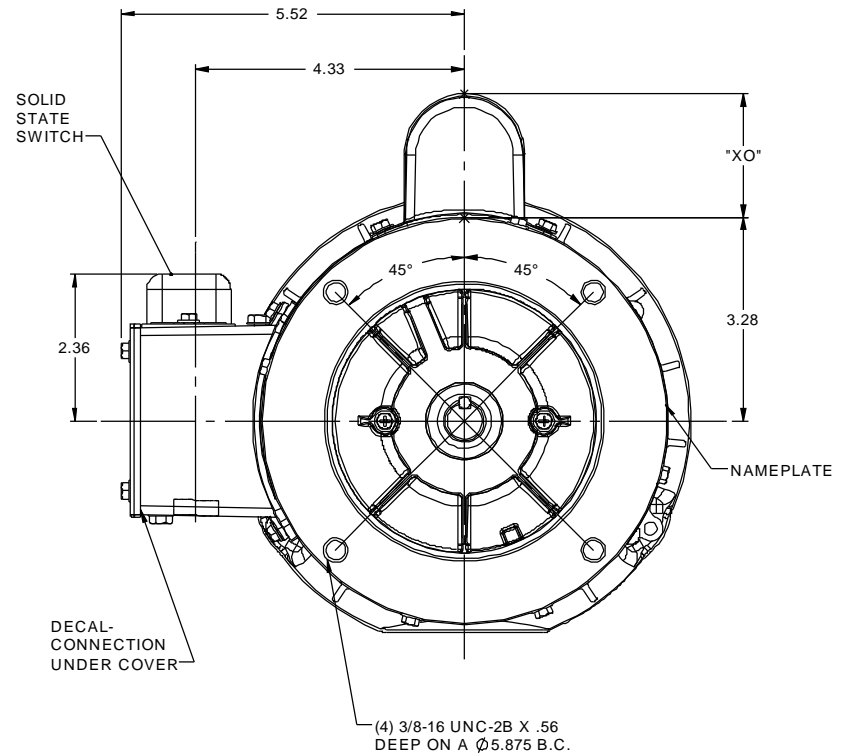
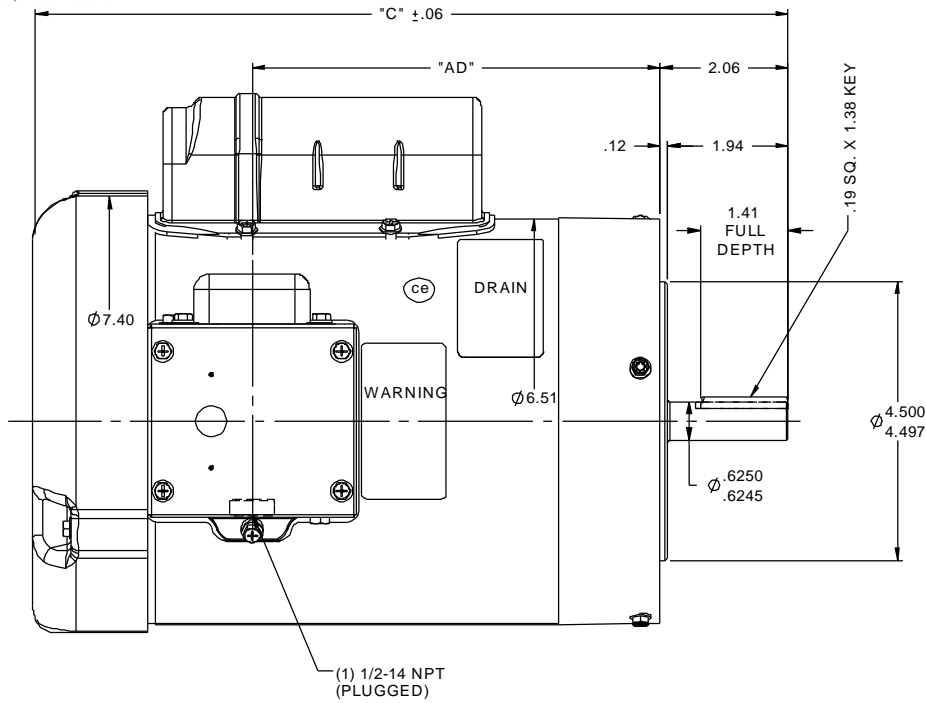
Output HP	<b>0.33 Hp</b>	Output KW	<b>0.25 kW</b>
Frequency	<b>60 Hz</b>	Voltage	<b>115/208-230 V</b>
Current	<b>6.4/3.4-3.2 A</b>	Speed	<b>1725 rpm</b>
Service Factor	<b>1.15</b>	Phase	<b>1</b>
Efficiency	<b>62 %</b>	Duty	<b>Continuous</b>
Insulation Class	<b>F</b>	Design Code	<b>L</b>
KVA Code	<b>M</b>	Frame	<b>56C</b>
Enclosure	<b>Totally Enclosed Fan Cooled</b>	Overload Protector	<b>No</b>
Ambient Temperature	<b>40 °C</b>	Drive End Bearing Size	<b>6205</b>
Opp Drive End Bearing Size	<b>6203</b>	UL	<b>Recognized</b>
CSA	<b>Y</b>	CE	<b>Y</b>
IP Code	<b>55</b>		

### Technical Specifications

Electrical Type	<b>Capacitor Start Induction Run</b>	Starting Method	<b>Across The Line</b>
Poles	<b>4</b>	Rotation	<b>Selective Counterclockwise</b>
Mounting	<b>Round</b>	Motor Orientation	<b>Horizontal</b>
Drive End Bearing	<b>Ball</b>	Opp Drive End Bearing	<b>Ball</b>
Frame Material	<b>Rolled Steel</b>	Shaft Type	<b>NEMA 56</b>
Overall Length	<b>10.16 in</b>	Frame Length	<b>4.50 in</b>
Shaft Diameter	<b>0.625 in</b>	Shaft Extension	<b>2.06 in</b>
Assembly/Box Mounting	<b>F1 Only</b>		
Outline Drawing	<b>028944-450</b>	Connection Diagram	<b>005278.07ME</b>

This is an uncontrolled document once printed or downloaded and is subject to change without notice. Date Created: 06/29/2018

RBC PROPRIETARY AND CONFIDENTIAL INFORMATION  
 This document is the property of REGAL BELOIT CORPORATION ("RBC") including its subsidiaries and divisions and contains proprietary information of RBC. This document is loaned on the express condition that neither the information contained therein shall be disclosed to others without the express written consent of RBC, and that the information shall be used by the recipient only as approved expressly by RBC. This document shall be returned to RBC upon its request. This document may be subject to certain restrictions under U.S. export control laws and regulations.



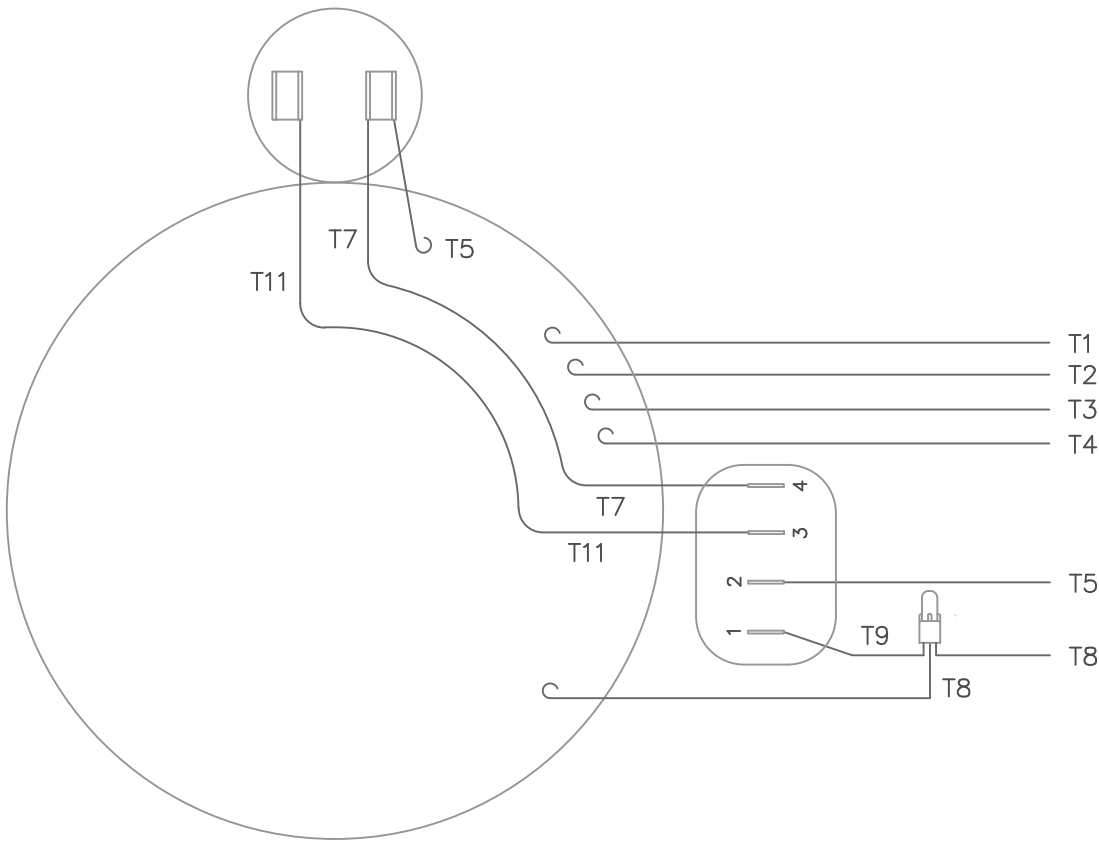
DASH NO.	"C"	"AD"
450	10.16	4.56
500	10.66	5.06
550	11.16	5.56
600	11.66	6.06
650	12.16	6.56
700	12.66	7.06

CAP. DASH	"XO"
A	1.54
B	2.01
C	2.25

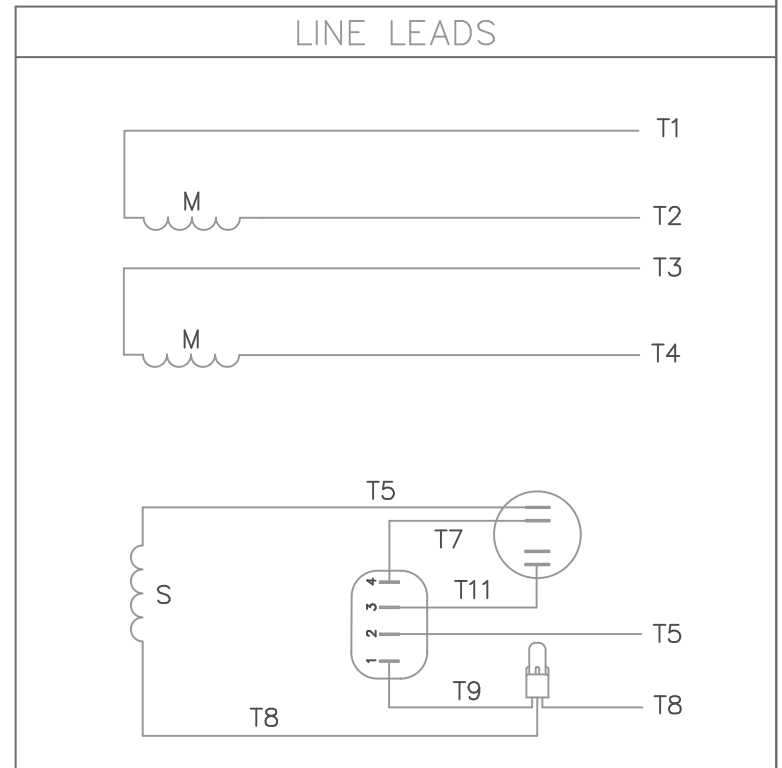
- SPECIAL FEATURES:
- 1) SHAFT SEALS & V-RING
  - 2) DRAIN HOLES IN BOTH ENDBELLS & CONDUIT BOX
  - 3) GASKETS THROUGHOUT
  - 4) STAINLESS STEEL SHAFT, HARDWARE, & NAMEPLATE

MAXIMUM FACE RUNOUT .004 T.I.R.  
 MAXIMUM PILOT ECCENTRICITY .004 T.I.R.  
 PERMISSIBLE SHAFT RUNOUT .002 T.I.R.

TOLERANCES UNLESS SPECIFIED		MARATHON ELECTRIC		DRAWN
DEC	INCHES			LST 1/19/09
X	±.1			CHK
XX	±.03	TITLE OUTLINE - 56C FRAME		APPR
XXX	±.005	TEFC - "C" FACE		SCALE 1:2
01	UPDATED PER ECR 0034519	LST 4/26/2013	XX XXXX ±.0005	MAT'L
NO	REVISION	BY & DATE	CHK LANG ±1/2°	FINISH
	THIRD ANGLE PROJECTION	RFP	PREV	REF
		NETWORK FILE NAME 028944	SIZE B	DRAWING NO 028944
				REV 01



VIEW FROM OUTSIDE OF MOTOR AT SWITCH END.



	ROTATION FACING LEAD END	L1	L2	JOIN & INSULATE
HIGH VOLT	C.C.W.	T1	T4 T5	T2,T3 T8
	C.W.	T1	T4 T8	T2,T3 T5
LOW VOLT	C.C.W.	T1,T3 T8	T2,T4 T5	
	C.W.	T1,T3 T5	T2,T4 T8	

		TOLERANCES UNLESS SPECIFIED			DRAWN LST 1/19/09 CHK APPD SCALE 1=1 REF FMF PREV
		DEC.	INCHES		TITLE
		.X	±.1		EXTERNAL WIRING DIAGRAM TYPE "C" WITHOUT PROTECTOR
		.XX	±.01		MAT'L.
		.XXX	±.005		DECAL - 004012
NO.	REVISION	BY & DATE	CHK	ANG ±1/2'	
THIS DRAWING IN DESIGN AND DETAIL IS OUR PROPERTY AND MUST NOT BE USED EXCEPT IN CONNECTION WITH OUR WORK ALL RIGHTS OF DESIGN AND INVENTION ARE RESERVED THIS IS AN ELECTRONICALLY GENERATED DOCUMENT - DO NOT SCALE THIS PRINT			RFP	CAD FILE 00527807ME	SIZE A
			DIST		DRAWING NO. 005278-07ME
					PAGE OF
					REV.

